

## How to modify a United Shade bracket to fit an MCD Motor

### Tools and hardware you need

1. Philips screwdriver
2. Cutting plier
3. Countersink bit
4. 1/8-in drill bit
5. Drill
6. #5-20 x 3/8 Phillips Flat Head screws (2)



Step 1- Take the existing red motor out by removing the screws

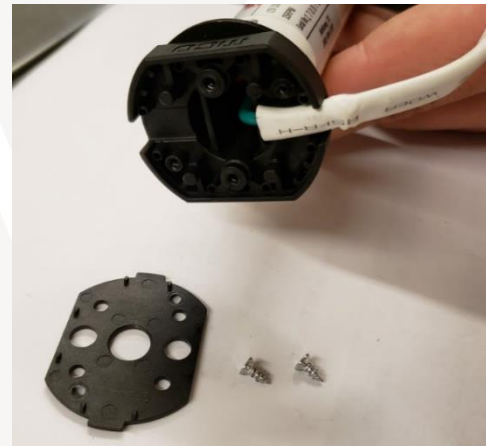
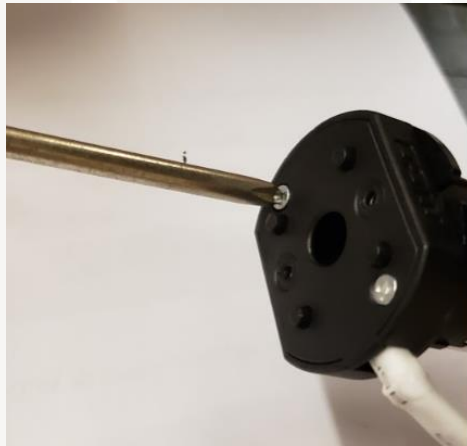
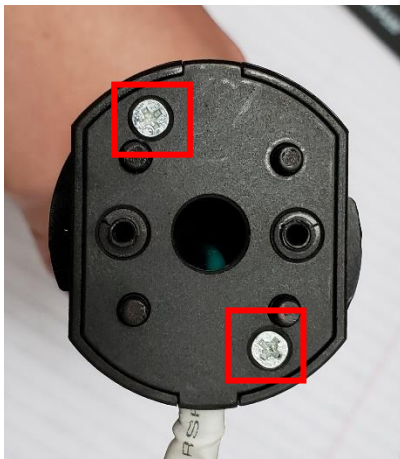




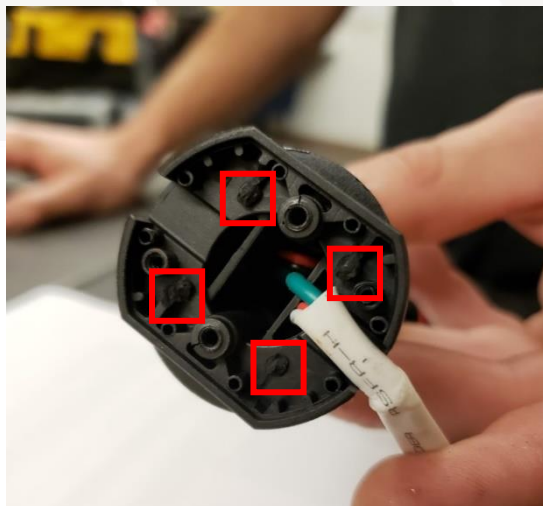
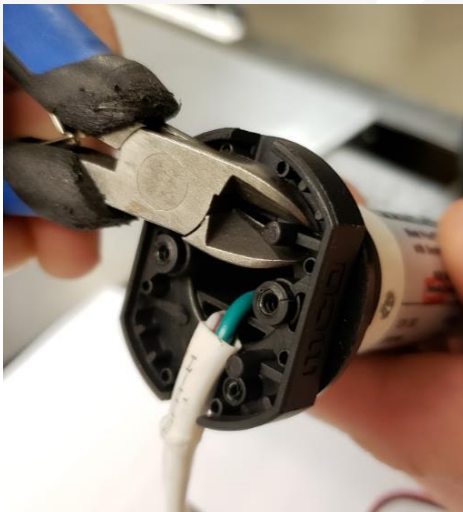
An AIRXCEL Brand

972.548.1850  
mcdinnovations.com  
3303 North McDonald St.  
McKinney, TX 75071

Step 2- Remove the headplate on MCD motor by removing 2 screws



Step 3- Use the cutting plier to cut 4 knobs





An AIRXCEL Brand

972.548.1850  
mcdinnovations.com  
3303 North McDonald St.  
McKinney, TX 75071

Step 4- Place the head plate back onto the motor. You should have a flat surface now.



Step 5- You need to drill 2 new holes on the bracket to mount the MCD motor. Mark the hole location on the bracket. These two holes should be perpendicular to the existing holes. You can use the headplate as a guide to drill the holes. Use the countersink to deburr the holes.







An AIRXCEL Brand

972.548.1850  
mcdinnovations.com  
3303 North McDonald St.  
McKinney, TX 75071

Step 6- Use 2 #5-20 x 3/8 Phillips Flat Head screws to mount the MCD motor on the bracket.

